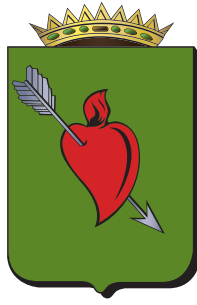




GIANPAOLO MONTALTO

Menswear/Uomo Alta Moda

Spring/Summer 2012
Primavera/Estate 2012

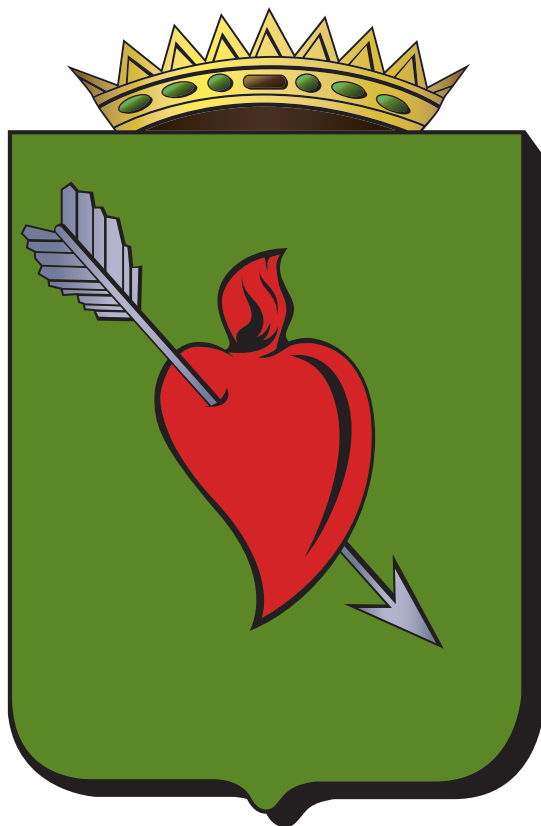


Gianpaolo Montalto was founded by its founder and creative director, Gianpaolo Montalto. The label was established to create a new direction in luxury mens clothing with emphasis on quality tailoring, unique fabrics and embellishment combined with elegance and style. Elements that are reflective of the brand's Italian origins.

The spirit of the label is to create unique lifestyle clothing. It elevates menswear to a new level using elements of red carpet glamour combined with contemporary aesthetic that resonates with lifestyle and image of celebrities and personalities as well as that of the accomplished man.

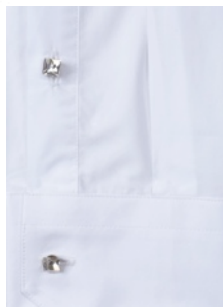


A truly distinctive menswear lifestyle brand.





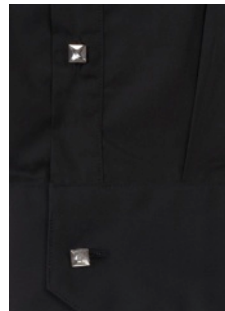
Black Cotton Polyester Satin Dress Jacket with Silver/Black Sequin Collar
(Code 01J-B-B)
White Cotton Dress Shirt with Emerald Cut Crystal Buttons (Code 26S-B-W)
Satin Bow Tie (Code T01-A-B)
Matching Fitted Dress Trousers (Code 20P-A-B)



White Cotton Dress Shirt with Emerald Cut Crystal Buttons (Code 26S-B-W)



Black Cotton Polyester Satin Dress Jacket with Jet Black Crystal Collar
(Code 01J-C-B)



Black Cotton Dress Shirt with Emerald Cut Crystal Buttons (Code 26S-B-B)



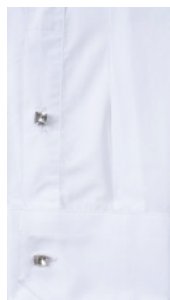
Black Cotton Jean Style Trousers with front and back pocket black crystal trim (Code 22P-A-B also available in navy Code 22P-A-N)



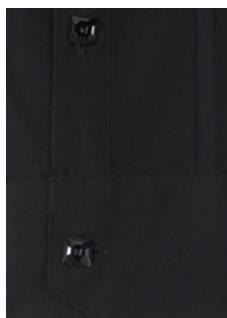
Black Cotton & Nylon Fitted Trousers (Code 20P-B-B)



Cotton Polyester Satin Dress Jacket with Silver & Crystal Floral Brooch
(Code 01J-A-B)
White Cotton Dress Shirt with Emerald Cut Crystal Buttons (Code 26S-B-W)
Satin Bow Tie (Code T01-A-B)
Matching Fitted Dress Trousers (Code 20P-A-B)



White Cotton Dress Shirt with Emerald Cut Crystal Buttons and Crystal Collar Applique (Code 26S-A-W)



Black Cotton Dress Shirt with Black Square Swarovski Buttons and Crystal Collar Applique (Code 26S-A-B)



Navy Cotton Polyester Satin Dress Jacket with Navy Crystal Studs (code 04J-A-N)



Black Cotton Polyester Satin Dress Jacket with Black Crystal Studs (code 04J-A-B)



Black Cotton Shirt with Black Gloss Sequin Applique
and Black Crystal Buttons (Code 25S-A-B)



Navy Cotton Shirt with Navy Matt Sequin Applique
and Navy Crystal Buttons (Code 25S-A-N)



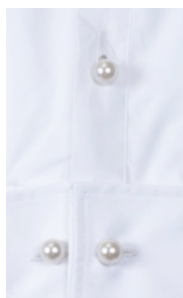
Black Lightweight Wool Polyester Half Lined Dress Jacket with Black handstitched Inkjet Square Crystals on Collar & Pockets (code 09J-A-B)
Matching Dress Trousers with handstitched Black Inkjet square crystals front and back pockets (code 09P-A-B)



Midnight Blue Lightweight Wool Polyester Half Lined Dress Jacket with handstitched Montana Blue Square Crystals on Collar & Pockets (code 09J-A-N)
Matching Dress Trousers with handstitched Montana Blue Square Crystals front and back pockets also available (code 09P-A-N)



Black Cotton Nylon Mix Short Cut Dress Jacket with
handstitched Black Inkjet Square Crystals (Code 02J-A-B)



White Cotton Dress Shirt with Pleated Front, Double Cuff, Pearl Buttons and matching cufflinks (Code 27S-A-W)



Black Cotton Dress Shirt with Pleated Front, Double Cuff, Silver Pearl Buttons & Matching Cufflinks(Code 27S-A-B)



Navy Cotton Dress Shirt with Pleated Front, Double Cuffs and Silver Pearl Buttons & Matching Cufflinks (Code 27S-A-N)

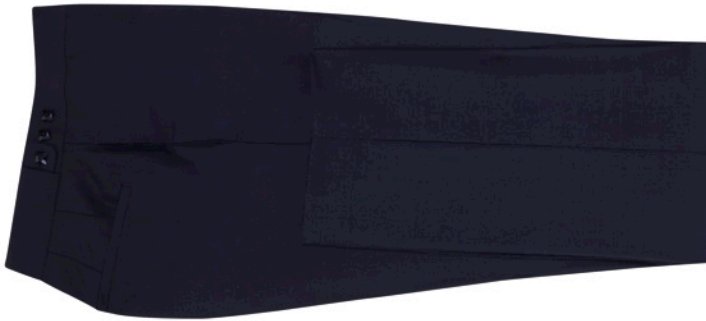


Black Wool Polyester Dress Jacket with Satin Trim and Baroque Silver Mesh Applique (Code 03J-A-B)

White Cotton Dress Shirt with Emerald Cut Crystal Buttons (Code 26S-B-W)

Black Satin Tie (Code T02-A-B)

Matching Black Trousers with Black Swarovski Buttons (Code 21P-A-B)



Midnight Blue Wool Polyester Dress Jacket with Black Satin Trim (Code 03J-B-N)
Matching Midnight Blue Trousers with Swarovski Buttons (Code 21P-A-N)



White Polyester/Spandex Jacket with Black Satin Trim (Code 05J-A-W)
White Cotton Short sleeve short with contrasting Black Collar & Cuff and
Swarovski Buttons (Code 28-S-W)



White Cotton Short Sleeve Shirt with contrasting Black Collar & Cuff and White Swarovski Buttons (Code 28-S-W)



Black Polyester/Spandex Satin Jacket with White Satin Trim (Code 05J-A-B)



Black Cotton Short Sleeve Shirt with contrasting White Collar & Cuff and Black Swarovski Buttons (Code 28-S-B)



Lightweight Nylon Soft Black Jacket with white contrasting piping (Code 06J-A-B)
White Cotton/Elastane V Neck T-shirt with crystal heart & arrow applique
(Code 30T-A-W)
White Cotton Jeans with Square Silver Pocket Studs (Code 29P-A-W)



White Cotton/Elastane V Neck T-shirt with crystal heart & arrow applique.
Also available in black and navy. (Code 30T-A-W)



Lightweight Nylon Soft Black Jacket with Blue contrasting piping (Code 06J-A-N)



Black Patent Leather Jacket (Code 11J-A-B)
White Cotton/Elastane V Neck T-shirt with crystal heart & arrow logo
applique (Code 30T-A-W). Also available in navy and black.
Black Cotton Jeans with Square Silver Pocket Studs (Code 29P-A-B)



Black Cotton/Elastane Crew Neck T-shirt with crystal heart & arrow logo applique (Code 31T-A-B) Also available in navy and white.



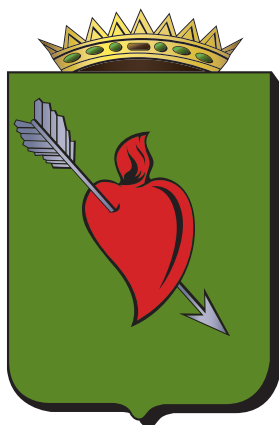
Plum Patent Leather Jacket (Code 11J-A-P)



Petrol Blue Metallic Leather Jacket (Code 10J-A-N)
Navy Blue Cotton/Elastane V Neck T-shirt with crystal heart & arrow logo
applique (Code 30T-A-N). Also available in black and white.
Navy Blue Cotton Jeans with Square Silver Pocket Studs (Code 29P-A-N)



Black Checkerboard Embossed Leather Jacket (Code 10J-A-B)



Sales Appointments & Enquiries

GIANPAOLO MONTALTO

info@gianpaolomontalto.com
www.gianpaolomontalto.com
+44 7790776709